

Darnall & Handsworth Chess Club

Bulletin No 36

Formed 1985

19/7/88

Forthcoming Events

- 22nd-24th Jul. f Skegness Congress - single section
 Sat. 23rd Jul. Knutsford Quickplay, 4 sections
 1st-13th Aug. BCF Congress Blackpool - Br. Champs. & many others
 * 17th-31st Aug. Short-Speelman, Candidates Quarter-final, London
 * 20th-29th Aug. Lloyds Bank Masters Tournament, London
 9th-11th Sep. f Hull Congress - open, U-151, U-111, U-60 (!)
 23rd-25th Sep. f Tyne & Wear Congress - open, U-151, U-121, U-91

* denotes new in list

f denotes entry forms available at club

SHORT is WORLD No3

The top thirteen in the latest FIDE rating list, dated 1/7/88, are shown in the table.

New List			Change	Old List	
1	2760	Kasparov	USR	+10	2750 1
2	2725	Karpov	USR	+10	2715 2
3=	2665	Belyavsky	USR	+20	2645 4
3=	2665	SHORT	ENG	+35	2630 6=
5	2645	SPEELMAN	ENG	+20	2625 9=
6	2640	Timman	HOL	-35	2675 3
7	2635	Portisch	HUN	+25	2610 15=
8=	2630	Gurevich	USR	-5	2625 9=
8=	2630	Ribli	HUN	+10	2620 12=
10=	2625	NUNN	ENG	+10	2615 14
10=	2625	Andersson	SWE	+20	2605 18
10=	2625	Salov	USR	+30	2595 19=
10=	2625	Ivanchuk	USR		

Kasparov's rating has risen for the third time in successive lists. He now has the same rating as Fischer had seventeen years ago, but is still below Fischer's maximum rating of 2785 attained in the list of 1/7/72.

Karpov has climbed back to his personal best rating of 8½ years ago.

Despite recent successes by Sokolov and Yusupov, Belyavsky has seemed for some time to be the USSR's best player after K. & K. Third equal place for him is no great surprise. The pleasing news for England is of course that Nigel Short is now 'no.1' in 'the rest of the world', and with Belyavsky heads the 'rest of the alphabet' following the K's, behind whom the rating gap has widened again.

Short's ascendance is something which has been observable for a good many years, and his successes come as less of a surprise than at one time. Jonathan Speelman's recent performances, however, have been more unexpected. Short definitely has the potential for great things. As for Speelman, it remains to be seen what happens. It is possible that after the current world championship cycle his 'annus mirabilis' may never be repeated. Equally, he may be England's first Challenger to the world champion.

Jan Timman of the Netherlands was once a young Dutch 'hope', and he is still young, but shows little sign of sufficient further improvement to challenge Kasparov and Karpov. Lajos Portisch of Hungary is the old man of the above list. The older Kortchnoi has dropped out of the top thirteen after having been fifth in the previous list. Nikolic, Tal, Vaganian and Yusupov are others to drop out of the top thirteen.

John Nunn inches his way up, though more slowly than his compatriots.

Vasily Ivanchuk won the 1987 European Junior Championship played at Gröningen, 1986/87. His rating at 1/7/86, two years ago, was 2475. By comparison, it took Short four years to get from 2475 to 2620.

Yorkshire League Results

Hull won the Woodhouse Cup (div.1),
Wakefield won the I.M.Brown Shield
for division 2. Undercliffe won
the Silver Rook for division 3, and
Hull 'C' won the A.G.Sunderland Cup
for division 4.

The Woodhouse Cup featured four
South Yorkshire teams, counting
Worksop as in this category for
these purposes. Promotion and
relegation is based on two up and

two down. In fact York University, placed second in the I.M.Brown, declined promotion
and so saved Leeds & YTV (now known simply as 'Leeds' again) from relegation.
Barnsley is replaced by Wakefield.

Hull
Bradford
Bradford Central
Sheffield
Bradford DCA
York
Huddersfield
Worksop
Rose Forgrove
Rotherham
Leeds & YTV
Barnsley

P	W	D	L	F	-	A	Pts
11	9	0	2	67		42	18
11	7	3	1	69½		40½	17
11	8	1	2	66		44	17
11	7	2	2	64		46	16
11	5	1	5	51		58	11
11	5	0	6	67		43	10
11	4	2	5	57½		51½	10
11	5	0	6	45		65	10
11	4	1	6	51½		58½	9
11	4	0	7	42½		66½	8
11	2	1	8	44		66	5
11	0	1	10	32		78	1

National Club Championship Results

The finals of the four sections were held at the premises of the sponsor, Peterborough Software, on July 16th. The results were:

Open - Glasgow Polytechnic 4-2 Bristol & Clifton

Major - Cambridge University 3-3 Fulham

Intermediate - Hackney 3½-1½ Lichfield

Minor - Barnstaple 3-2 King's Head

(Cambridge University won on board count.)

Alongside these matches
six members of the BWCA
(British Women's Chess
Association) played a
match against six computers
with the result: 4½-1½ in
favour of the women.

County Championship Results

English Counties: ½-finals - Lancashire 10-6 Essex
Gloucestershire 5½-10½ Kent

final - Lancashire
beat Kent

Minor Counties: ½-finals - Sussex 11½-4½ Bedfordshire
Cambridgeshire 8½-6½ Shropshire (+1@)

final - Cambridgeshire
beat Sussex

Second Teams: ½-finals - Kent 7-9 Lancashire
Middlesex 9-7 Warwickshire

Third Teams: ½-finals - Warwickshire 14-6 Cheshire & N.Wales
Lancashire 5½-13½ Kent (+1@)

Yorkshire 1st team is so weak these days that they did not even qualify for the
English Counties ¼-finals. Yorkshire 2nd team qualified for the Second Teams' ¼-finals, but lost to Middlesex 2nds. On board one in that match S.J.Mann drew with
J.M.Quinn of Middlesex.

5-Minute Tournament held recently at the club.

1	W.P.Somerset	6½	- 8 rounds
2	G.J.Langer	6	
3	M.Emerton	5½	
4	B.D.Stephenson	4½	
5=	D.K.Hodgett	4	
5=	A.Bramall	4	
7=	M.Turnidge	3½	
7=	G.D.Brown	3½	
9	M.Parkin	3	(out of six)
10	B.Emerton	2½	
11	G.Smith	2	(out of five)
12	D.J.Slater	0	(out of four)

Further details of FIDE ratings:

14	J.Hjartarson	ISD	2620
15	A.Yusupov	USSR	2615
16=	Y.Seirawan	USA	2610
16=	M.Tal	USSR	2610
16=	P.Nikolic	Yug	2610
19	Murray Chandler	Eng	2605
20=	R.Hubner	FRG	2600
20=	G.Sax	Hun	2600
20=	A.Sokolov	USSR	2600

Other leading English ratings include
Julian Hodgson 2525, Danny King 2520,
Jonathan Mestel 2510, Tony Kosten 2510,
William Watson 2500, Michael Stean 2500,
Jonathan Levitt 2485, Stuart Conquest
2480.

The leading ratings among English
women players are as follows:

1.	Susan Arkell	2355
2.	Jana Miles	2300
3.	Teresa Needham	2250
4.	Sheila Jackson	2245
5.	Mandy Hepworth	2115
6.	Sarah Christophers	2105

Life at the Top

The first International Rating List published by FIDE was the '1970' list which was based on results of games played over the period 1/1/68 to 31/12/70. For the first eleven years new lists were drawn up on a yearly basis, but from 1981 onwards new lists have been published every six months. The Elo system is used to calculate them.

Ratings in the 2700's are exceptional, only 4 players ever having attained such ratings. There are usually only a dozen or so players in any list with ratings in the 2600's, but the number of players in the 2500's runs into three figures. Short's rating of 2225 in the list of 1/1/78 put him at roughly 1,450th in the world! Ratings for men^{only} not published below 2200.

As a rough guide, international grandmasters have ratings down to about 2500, and international masters down to 2300.

The table below contains the top 2 or three places from all the lists along with all the ratings listed for Fischer, Karpov, Kasparov and England's rising star Nigel Short. The numbers given are the position in the list (in order of rating) and the rating itself. Although limited essentially to the top three places, the table illustrates the pre-eminence at different times of certain players, the arrival on the scene of Karpov and then Kasparov, and the rise albeit more gradual of Nigel Short in terms of ratings. Short's position in lists prior to 1/7/86 is omitted simply because of the time it takes to extract the information from alphabetical lists containing thousands of names.

list date	Fischer (USA)	Kasparov (USSR)	Karpov (USSR)	Short (ENG)	other placings
1970	1 2740		41=2540		2 2690 Spassky (USSR)
1/7/71	1 2760		38=2540		2 2690 Spassky
1/7/72	1 2785		7=2630		2 2660 Spassky
1/7/73	1 2780		2 2660		3 2655 Spassky
1/5/74	1 2780		2 2700		3 2670 Korchnoy (USSR)
1/1/75	1 2780		2 2705		3 2665 Korchnoy
1/1/76			1 2695		2 2670 Korchnoy
1/1/77			1 2690		2=2645 Korchnoy, Petrosian
1/1/78			1 2725	2225	2 2665 Korchnoy (USSR)
1/1/79		40=2545	1 2705	2260	2 2695 Korchnoy (SWZ)
1/1/80		15=2595	1 2725	2360	2 2705 Tal (USSR)
1/1/81		4 2625	1 2690	2440	2 2650 Korchnoy
1/7/81		3=2630	1 2700	2440	2 2695 Korchnoy
1/1/82		4 2640	1 2720	2430	2 2655 Timman (HOL)
1/7/82		2 2675	1 2700	2485	3 2635 Korchnoy
1/1/83		2 2690	1 2710	2510	3 2645 Ljubojevic (YUG)
1/7/83		2 2690	1 2710	2475	3 2645 Ljubojevic
1/1/84		1 2710	2 2700	2500	3 2635 Ljubojevic, Korchnoy
1/7/84		1 2715	2 2705	2510	3 2650 Timman
1/1/85		1 2715	2 2705	2535	3 2650 Timman
1/7/85		2 2700	1 2720	2575	3 2640 Timman
1/1/86		1 2720	2 2700	2585	3=2645 Timman, Yusupov, &
1/7/86		1 2740	2 2705	9 2615	3 2660 Yusupov Vaganian
1/1/87		1 2735	2 2710	7=2615	3 2645 Yusupov, Sokolov(USSR)
1/7/87		1 2740	2 2700	10=2620	3 2635 Yusupov (USSR)
1/1/88		1 2750	2 2715	6=2630	3 2675 Timman
1/7/88		1 2760	2 2725	3=2665	3=2665 Belyavsky (USSR)

The highest ever rating was Fischer's 2785 in the 1/7/72 list. Ten days after that date Spassky started his World Championship match with Fischer! Spassky's 2690 rating of the time was itself very high, as apart from Fischer, Karpov and Kasparov, only Korchnoi (twice) and Tal (once) have exceeded that 2690 rating.

Losing to Fischer was the beginning of the end of Spassky's life at the top. Karpov pushed him into third place then Korchnoy displaced him from there. Fischer then withdrew from the scene after giving Karpov the World Championship by default in 1975. People criticised Karpov as a bogus world champion. The fact that he had won his way through the Candidates' matches and had pushed his rating beyond the 2700 'barrier' did not seem to impress some people at the time!

In the absence of Fischer, Karpov and Korchnoy set up the first spell of domination by the K's. This lasted about 6½ years, but a hiccup was caused when Tal became the third player, after Fischer and Karpov, to achieve a 2700+ rating. That was his 2705 in the 1/1/80 list.

Whether sliced bread reached the Netherlands before Max Euwe was born or after is unclear, but in any case Jan Timman was the best thing in the Netherlands since the two, and Timman it was who ended Korchnoy's tenure of second place in the lists. Korchnoy would have reclaimed that place had Kasparov not popped up at that point.

Kasparov first entered the rating lists as 40th equal in the world at 2545 in 1979, not in the main list but as one of the additions in the supplementary list of 1/7/79. (Prior to 1981, such mid-year lists were published with amendments and additions to the January list.) Having once reached the number 2 spot Kasparov has not fallen below it, and has since then been sharing the first two places with Karpov in the second spell of domination by the K's.

In only two of the twenty-one lists since the withdrawal of Fischer have Karpov, Korchnoy and Kasparov between them not held first place and at least equal second; but 'K' does stand for 'king'! In only the first three lists were the K's totally absent from the top two.

While Karpov and Kasparov have been squabbling with each other, the remaining grandmasters have been vying for third place. A tendency is apparent for one player to come third in about three lists, and then be displaced by another. In this fashion third place has been occupied successively by Ljubomir Ljubojevic of Yugoslavia, Jan Timman of the Netherlands, and Artur Yusupov of the USSR. After a solitary reappearance by Timman, the first ever English player has taken third place, albeit shared. Short's 2665 is the highest FIDE rating ever achieved by an English player.

When the first list came out, Nigel Short was 5½ and was still nine years away from earning his International Master title! Kasparov was over 7½. A few months after Short earned his IM title, the older Kasparov earned his GM title - precisely on his 17th birthday - at a tournament at Baku. A little before Baku, Kasparov had won the World Junior Championship (Dortmund 1980) with Short finishing second. These events correspond roughly to the players' first appearances in the rating lists. Karpov had turned 19½ by the time the first list appeared and by then had already won the World Junior Championship (Stockholm, 1969), while Fischer was an old man - in his 28th year.

Club Championship - Round 3 results to date

What about the others?

(2) S.J.Mann	1-0 J.Gallagher (2)	(1) B.D.Stephenson	0-1 D.K.Hodgett (1)
(2) W.P.Somers	½-½ M.Emerton (2)	(½) G.J.Langer	1-0 R.Lindsay (½)
(2) G.Smith	? T.P.Kellman (1½)	(1) R.Bell	? A.Bramall (½)
(1) G.Facer	0-1 G.D.Brown (1)	(0) D.J.Slater	? F.Clarke (0)
(1) M.Turnidge	0-1 M.Parkin (1)		

NOT THE 1988 - YCA - GRADINGS

The table below contains grading data regarding our club's members. It has been extracted from the list for the whole of Sheffield, as sent off to the Yorkshire grader. The list covers results from Association and Works competitions (excluding the Biffen-Newsome Cup) as well as the Darnall & Handsworth Chess Club Congress, the Annual Match and the G.W.Moses Trophy. Unfortunately the local grader forgot to include our Club Championship results. The only significant effect of this omission is that Geoff Facer is unlikely to have clocked up enough games to get into the Yorkshire Grading list.

The key items are the 'games' and 'score' shown towards the right of the page, being the count of games graded and the score resulting. For interest's sake the season's performance ('perfm') is shown, but it should be emphasised that this is not the 1988 grade.

Assuming the rules for inclusion in the Yorkshire list do not change, then a minimum of 8 games in the current season is required. That affects Geoff Facer and Matthew Cooper. Ideally, 30 results are the minimum considered statistically desirable, so where a player has less than 30 games graded in the current season ('87/88), games are brought forward from the previous season to increase the game count as far as possible up to the desired 30 games. The rightmost column headed 'bf' shows how many games would be brought forward if there were no further games to be added by the Yorkshire grader. The games brought forward are not actual results from the end of the previous season but rather notional ones with scores proportional to last seasons total score, or in effect games played at last year's performance. Again there is a requirement for a minimum of 18 games over the two seasons.

The 'bottom line' of all this is the column about two thirds of the way across, headed 'predicted grade'. This is what the 1988 grades would be if no other results were in the system, for this season or last, and assuming the method adopted for bringing forward games is as used by the Yorkshire grader.

-- season 1986/87 --						predicted	-- season 1987/88 --			
gs	score	perfm	grade	name	club	grade	games	score	perfm	bf
16	1534	96	88	Bell R	SKTN	85	15	1111	74	15
14	1113	80		Bird SA	SKTS	71	9	523	58	14
10	836	84		Bramall A	SK	106	18	2133	119	10
24	2353	98	101	Brough GJ	SKTR	101	16	1649	103	14
42	5844	139	139	Brown GD	SKTH	140	48	6725	140	0
17	1701	100		Clarke F	SKTS	106	21	2271	108	9
1	104		88	Cooper MN	SK	€ 88	3	249		
0				Emerton M	SK	161	24	3866	161	0
9	1024	114	114	Facer G	SK	€108	6	590		9
19	2477	130	125	Gallagher J	SK	127	18	2251	125	12
29	3573	123	123	Hodgett DK	SKTP	116	35	4061	116	0
28	4144	148	152	Johnson MP	SKTS	134	36	4827	134	0
13	1115	86	79	Kellman TP	SKTS	98	19	1983	104	11
10	994	99		Langer GJ	SK	99	9	880	98	10
26	2724	105	104	Lindsay R	SKTR	94	21	1891	90	9
37	6688	181	176	Mann SJ	SKTN	179	38	6785	179	0
29	3672	127	127	Parkin M	SKTL	123	32	3941	123	0
11	1234	112		Smith G	SK	121	12	1541	128	11
14	1613	115		Somerset WP	SKTR	129	27	3525	131	3
22	2180	99	97	Stephenson BD	SKTS	111	21	2445	116	9
23	2034	88	88	Turnidge M	SKTR	95	16	1614	101	14
27	3187	118	118	Whitfield JT	SKTL	110	19	2008	106	11

(€ denotes a basis of less than the minimum number of games.)

CAPTAIN'S LOG: Star Date 1987/88:

Secretary Mann reporting. (Well, if Brown doesn't do it I'll have to.)

The following is an imitation (beware!) of Mick Turnidge's tabular report in bulletin no.34, this one being for the 'A' team.

date	team	venue	score	SJM	ME	MPJ	GDB	DKH	GS	JG	MNC	WPS	MP	BDS
28/10	Aughton 'B'	A	4-2	1/1	1/3	½/2	½/4	1/5	0/6					
24/11	Worksop 'A'	H	3-3	½/1	1/3	0/2	1/4		½/5				0/6	
1/12	Barnsley 'B'	A	3-3	1/1		0/2	1/3	0/4	1/5		0/6			
9/12	Ecclesall 'B'	A	6-0	1/1	1/2	1/3	1/4	1/5	1/6					
15/12	Hope Valley	H	2½-3½	½/1	0/2	0/3	1/4		0/5		1/6			
21/12	Chest'd 'B'	A	3-3	½/1	0/2	1/3	½/½	1/5				0/6		
5/1	B. & J. 'B'	H	4-2	1/1	1/2	½/3	½/4				0/5		1/6	
2/2	Aughton 'B'	H	3-3	1/1	0/2	0/3	1/4		½/5					½/6
11/2	Worksop 'A'	A	1½-4½	1/1	1/2	1/3	1/4	0/5	½/6					
22/2	W. Lion 'B'	A	4-2	1/1	½/2	½/3	1/4	1/6		0/5				
1/3	Chest'd 'B'	H	4½-1½	1/1	½/2	1/3	0/4	1/5				1/6		
21/3	B. & J. 'B'	A	5½-½	1/1	1/2	1/3	1/4	½/5	1/6					
29/3	Ecclesall 'B'	H	4-2	1/1	1/2	½/3	½/4	0/5	1/6					
14/4	Hope Valley	A	4-2	1/1	1/2	0/3	0/4	1/5	1/6					
19/4	Barnsley 'B'	H	5-1	1/1	1/2	½/3	½/4		1/5			1/6		
26/4	W. Lion 'B'	H	5-1	1/1	1/2		0/3	1/4	1/5			1/6		
total				14½	11	7½	10½	7½	8½	0	1	3	1	½
/out of				/16	/15	/15	/16	/11	/12	/1	/3	/4	/2	/1
percentage				91%	73%	50%	66%	68%	71%	0%	33%	75%	50%	50%

(δ denotes win by default.)

Howarth, Horwath, & Haworth

In bulletin 34, the editor expressed incredulity regarding the names of players in the visiting Ecclesall team which played our 'B' team. Out of curiosity he asked one of their players about it at the Annual Match, and apparently there really are three players with anagrammatic names, as cited, but they have nobody called Harwoth. Never mind.

Collated League Results

By popular demand, assuming W.P.S. to be typical of the populace, the results of all teams in are two teams' divisions are set out in the following pages. Missing matches are presumably defaults. Our own teams' results are printed again all together - for ease of reference.

Weston Trophy

Aughton 2		Darn. & Hands. 4		Darn. & Hands. 3		Worksop 3	
PG Swanson	0-1	SJ Mann		SJ Mann	$\frac{1}{2}$ - $\frac{1}{2}$	JL Coe	
JE Sugden	$\frac{1}{2}$ - $\frac{1}{2}$	MP Johnson		MP Johnson	0-1	M Saunders	
G Barnes	0-1	M Emerton		M Emerton	1-0	AD Fidler	
R Wilson	$\frac{1}{2}$ - $\frac{1}{2}$	GD Brown		GD Brown	1-0	G Goddard	
S McCandlish	0-1	DK Hodgett		G Smith	$\frac{1}{2}$ - $\frac{1}{2}$	C Barker	
A Aldam	1-0	G Smith		M Parkin	0-1	AGJ Smith	
Darn. & Hands. 2 $\frac{1}{2}$		Hope Valley 3 $\frac{1}{2}$		Chesterfield 3		Darn. & Hands. 3	
SJ Mann	$\frac{1}{2}$ - $\frac{1}{2}$	A Rutherford		S Bracey	$\frac{1}{2}$ - $\frac{1}{2}$	SJ Mann	
M Emerton	0-1	MJ Joyce		AM Head	1-0	M Emerton	
MP Johnson	0-1	JR Hoole		GC Yarwood	0-1	MP Johnson	
GD Brown	1-0	AJ Campbell		H Poopuu	$\frac{1}{2}$ - $\frac{1}{2}$	GD Brown	
G Smith	0-1	D Elwood		RJ Hooton	0-1	DK Hodgett	
MN Cooper	1-0	B Capp		ML Fanshawe	1-0	WP Somerset	
Ecclesall 0		Darn. & Hands. 6		Barnsley 3		Darn. & Hands. 3	
JE Williams	0-1	SJ Mann		K Hunter	0-1	SJ Mann	
HW Rayson	0-1	M Emerton		T Johnson	1-0	MP Johnson	
E Carnie	0-1	MP Johnson		B Holdsworth	0-1	GD Brown	
MA Anderson	0-1	GD Brown		D Woodhouse	1-0	DK Hodgett	
B Crownshaw	0-1	DK Hodgett		E Buck	0-1	G Smith	
P Mitchell	0-1	G Smith		C Lunn	1-0	MN Cooper	
Darn. & Hands. 4		B. & J. 2		Darn. & Hands. 3		Aughton 3	
SJ Mann	1-0	JS Speck		SJ Mann	1-0	PG Swanson	
M Emerton	1-0	D Toft		M Emerton	0-1	D Glossop	
MP Johnson	$\frac{1}{2}$ - $\frac{1}{2}$	T Walsh		MP Johnson	0-1	JG Primrose	
GD Brown	$\frac{1}{2}$ - $\frac{1}{2}$	N Bennett		GD Brown	1-0	R Wilson	
MN Cooper	0-1	P Linton		G Smith	$\frac{1}{2}$ - $\frac{1}{2}$	A Aldam	
M Parkin	1-0	DL Cook		BD Stephenson	$\frac{1}{2}$ - $\frac{1}{2}$	P Connolly	
Worksop 1 $\frac{1}{2}$		Darn. & Hands. 4 $\frac{1}{2}$		White Lion 2		Darn. & Hands. 4	
JL Coe	0-1	SJ Mann		KA McIntosh	0-1	SJ Mann	
M Saunders	0-1	M Emerton		M Brumby	$\frac{1}{2}$ - $\frac{1}{2}$	M Emerton	
AD Fidler	0-1	MP Johnson		P Fletcher	$\frac{1}{2}$ - $\frac{1}{2}$	MP Johnson	
I Saunders	0-1	GD Brown		B Wardle	0-1	GD Brown	
AGJ Smith	1-0	DK Hodgett		LJ Fry	1-0	J Gallagher	
G Goddard	$\frac{1}{2}$ - $\frac{1}{2}$	G Smith		R Keenan	0-1	DK Hodgett	
Darn. & Hands. 4 $\frac{1}{2}$		Chesterfield 1 $\frac{1}{2}$		B. & J. $\frac{1}{2}$		Darn. & Hands. 5 $\frac{1}{2}$	
SJ Mann	1-0	GC Yarwood		JS Speck	0-1	SJ Mann	
M Emerton	$\frac{1}{2}$ - $\frac{1}{2}$	H Poopuu		SW Cooke	0-1	M Emerton	
MP Johnson	1-0	RJ Hooton		T Walsh	0-1	MP Johnson	
GD Brown	0-1	ML Fanshawe		L Pratt	0-1	GD Brown	
DK Hodgett	1-0	TH Hand		N Bennett	$\frac{1}{2}$ - $\frac{1}{2}$	DK Hodgett	
WP Somerset	1-0	Absentee		R Webster	0-1	G Smith	
Darn. & Hands. 5		White Lion 1		Hope Valley 2		Darn. & Hands. 4	
SJ Mann	1-0	M Brumby		A Rutherford	0-1	SJ Mann	
M Emerton	1-0	P Fletcher		MJ Joyce	0-1	M Emerton	
GD Brown	0-1	B Wardle		JR Hoole	1-0	MP Johnson	
DK Hodgett	1-0	RA Guest		AJ Campbell	1-0	GD Brown	
G Smith	1-0	LJ Fry		D Mander	0-1	DK Hodgett	
WP Somerset	1-0	R Keenan		R Jennings	0-1	G Smith	
Darn. & Hands. 5		Barnsley 1		Darn. & Hands. 4		Ecclesall 2	
SJ Mann	1-0	T Johnson		SJ Mann	1-0	JE Williams	
M Emerton	1-0	B Holdsworth		M Emerton	1-0	E Carnie	
MP Johnson	$\frac{1}{2}$ - $\frac{1}{2}$	C Lunn		MP Johnson	$\frac{1}{2}$ - $\frac{1}{2}$	MA Anderson	
GD Brown	$\frac{1}{2}$ - $\frac{1}{2}$	E Soar		GD Brown	$\frac{1}{2}$ - $\frac{1}{2}$	NA Wragg	
G Smith	1-0	I Jones		DK Hodgett	0-1	B Crownshaw	
WP Somerset	1-0	T Todd		G Smith	1-0	P Mitchell	

Richardson Cup

S.A.S.C.A.	1½	Darn.&Hands.	4½	Darn.&Hands.	2½	Aughton	3½
KM Baxter	0-1	SJ Mann		SJ Mann	½-½	G Frost	
JR Swindell	½-½	MP Johnson		MP Johnson	½-½	DB Blackburn	
MOC Joy	0-1	M Emerton		M Emerton	½-½	GQB Havenhand	
SA Joy	0-1	GD Brown		GD Brown	½-½	PG Swanson	
CE Joy	½-½	J Gallagher		WP Somerset	0-1	D Glossop	
MJS Webster	½-½	DK Hodgett		DK Hodgett	½-½	T Bradley	

Athenaeum Cup

Darn.&Hands.	3½	Whiston	2½	Darn.&Hands.	3½	Thorncliffe	2½
J Gallagher	½-½	M Potts		M Parkin	0-1	RE Desmedt	
WP Somerset	½-½	P Orton		WP Somerset	1-0	AR Phillips	
GJ Brough	0-1	G Gray		R Lindsay	½-½	F Furniss	
BD Stephenson	1-0	D Mangion		GJ Brough	½-½	D Hardman	
A Bramall	1-0	D Watson		M Turnidge	½-½	JH Womersley	
TP Kellman	½-½	A Aldam		A Bramall	1-0	J Smith	

Darn.&Hands.	5	S.A.S.C.A.	1	B. & J.	2	Darn.&Hands.	4
J Gallagher	½-½	DS MacLean		A Hammond	0-1	J Gallagher	
M Parkin	½-½	D Shaw		AM Neate	0-1	M Parkin	
WP Somerset	1-0	S Naik		M Cooper	0-1	WP Somerset	
BD Stephenson	1-0	G Sharp		G Chapman	0-1	GJ Brough	
A Bramall	1-0	E Horsfield		TE Rhodes	1-0	R Lindsay	
GJ Langer	1-0	S Horsfield		P Wilcock	1-0	GJ Langer	

Aughton	5	Darn.&Hands.	1	White Lion	2	Darn.&Hands.	4
JE Sugden	1-0	DK Hodgett		S Bessell	0-1	WP Somerset	
PM Higgins	1-0	WP Somerset		W Hales	1-0	G Facer	
A Aldam	1-0	A Bramall		D Masters	0-1	A Bramall	
P Connolly	1-0	G Facer		N Ford	½-½	GJ Brough	
K Randall	1-0	GJ Brough		JS Knight	0-1	BD Stephenson	
J Higgins	0-1	GJ Langer		R Keenan	½-½	GJ Langer	

Clay Cross	2	Darn.&Hands.	4	Darn.&Hands.	4	Nomads	2
S Pringle	0-1	J Gallagher		J Gallagher	0-1	MD Smith	
D Hartley	0-1	WP Somerset		M Parkin	½-½	D Greensmith	
M Higginbottom	1-0	GJ Brough		WP Somerset	½-½	I Mortimer	
K Higginbottom	1-0	R Lindsay		A Bramall	1-0	K Dewhurst	
H Schofield	0-1	A Bramall		GJ Langer	1-0	M Turner	
M Turton	0-1	GJ Langer		G Facer	1-0	A Wright	

Sheff. Deaf	3	Darn.&Hands.	3	Darn.&Hands.	3	Workshop	3
PT Sharpe	½-½	J Gallagher		J Gallagher	1-0	I Saunders	
D Guy	1-0	WP Somerset		M Parkin	½-½	AGJ Smith	
P Slater	1-0	GJ Langer		WP Somerset	½-½	G Goddard	
D Whiston	0-1	A Bramall		A Bramall	½-½	SJ Turner	
MW Simmons	½-½	R Lindsay		GJ Langer	0-1	G Keeley	
G Hunter	0-1	TP Kellman		G Facer	½-½	M Ottey	

Barnsley	2	Darn.&Hands.	4	Darn.&Hands.	5½	Ecclesall	½
E Soar	½-½	J Gallagher		J Gallagher	½-½	P Mitchell	
JN Stevens	0-1	WP Somerset		DK Hodgett	1-0	I Horwath	
I Jones	½-½	A Bramall		M Parkin	1-0	M Haworth	
AS Dudek	0-1	G Facer		A Bramall	1-0	T Crawley	
T Brook	½-½	R Lindsay		G Facer	1-0	A Smithson	
M Gaunt	½-½	M Turnidge		GJ Langer	1-0	M Howarth	

Hope Valley	3½	Barnsley	2½	Chesterfield	1½	Aughton	4½	Aughton	4½	B. & J.	1½	Workshop	2	Chesterfield	4
Rutherford	Y-Y K	Hunter	GC	Yarwood	0-1 PG	Swanson	PG	Swanson	1-0 JS	Speck	M	Saunders	0-1 AM	Head	
Joyce	Y-Y A	Perry	RJ	Hooton	0-1 JE	Sugden	JSJ	Barker	1-0 N	Gough	JL	Coe	1-0 S	Bracey	
Hoole	1-0 B	Holdsworth	ML	Fanshawe	1-0 JG	Primrose	D	Glossop	1-0 D	Toft	AD	Fidler	0-1 G	Peters	
Campbell	Y-Y AM	Burrell	TH	Hand	0-1 R	Wilson	T	Bradley	1-0 N	Bennett	AGJ	Smith	1-0 GC	Yarwood	
Capp	0-1 E	Buck	IA	Folter	0-1 S	McCandlish	G	Barnes	0-1 T	Walsh	G	Goddard	0-1 H	Paopuu	
Bigham	1-0 C	Lunn	B	Henry	Y-Y F	Connolly	JG	Prirose	Y-Y MK	Miller	A	Ward	0-1 ML	Fanshawe	
Barnsley	5	White Lion	1	Ecclesall	1	Hope Valley	5	B. & J.	1½	Chesterfield	4½	Workshop	2½	Barnsley	3½
Hunter	1-0	Absentee	JE	Williams	0-1 A	Rutherford	JS	Speck	0-1 M	Johnson	M	Saunders	Y-Y K	Hunter	
England	1-0	Absentee	HW	Rayson	Y-Y MJ	Joyce	SW	Cooke	0-1 S	Bracey	JL	Coe	0-1 A	Perry	
Holdsworth	Y-Y RA	Guest	MA	Anderson	0-1 JR	Hoole	D	Toft	0-1 S	Peters	AD	Fidler	Y-Y D	Woodhouse	
Johnson	Y-Y LJ	Fry	E	Carnie	0-1 AJ	Campbell	T	Walsh	0-1 GC	Yarwood	AGJ	Smith	0-1 B	Holdsworth	
Buck	1-0 R	Keenan	B	Crownshaw	Y-Y D	Elwood	N	Bennett	Y-Y RJ	Hooton	G	Goddard	1-0 E	Buck	
Lunn	1-0	Absentee	P	Mitchell	0-1 D	Mander	P	Linton	1-0 ML	Fanshawe	I	Saunders	Y-Y C	Lunn	
Hope Valley	4	White Lion	2	Ecclesall	1	Workshop	5	Barnsley	4½	Aughton	1½	White Lion	3	Workshop	3
Joyce	1-0 G	Fletcher	JE	Williams	0-1 M	Saunders	K	Hunter	1-0 PG	Swanson	G	Fletcher	Y-Y JL	Coe	
Hoole	1-0 P	Fletcher	HW	Rayson	0-1 JL	Coe	T	Johnson	0-1 D	Glossop	P	Fletcher	1-0 M	Saunders	
Campbell	1-0	Absentee	E	Carnie	0-1 AD	Fidler	D	Woodhouse	Y-Y T	Bradley	B	Wardle	1-0 AD	Fidler	
Capp	1-0 RA	Guest	B	Oakes	1-0 AGJ	Smith	B	Holdsworth	1-0 JB	Primrose	RA	Guest	Y-Y C	Barker	
Mander	0-1 LJ	Fry	B	Crownshaw	1-0 G	Goddard	C	Lunn	1-0 PM	Higgins	LJ	Fry	0-1 G	Goddard	
Williams	0-1 R	Keenan	P	Mitchell	0-1 I	Saunders	C	Hayland	1-0 G	Barnes	R	Keenan	0-1 N	Baxendale	
B. & J.	0	Workshop	6	B. & J.	4½	Barnsley	1½	Chesterfield	3	White Lion	3	Barnsley	4½	Ecclesall	1½
Speck	0-1 JL	Coe	L	Pratt	1-0 T	Johnson	S	Bracey	1-0 G	Fletcher	K	Hunter	1-0 JE	Williams	
Bennett	0-1 M	Saunders	JS	Speck	1-0 AM	Burrell	AM	Head	Y-Y M	Brumby	T	Johnson	Y-Y HW	Rayson	
Walsh	0-1 AD	Fidler	SW	Cooke	0-1 E	Buck	G	Peters	0-1 F	Fletcher	D	Woodhouse	Y-Y E	Carnie	
Toft	0-1 G	Goddard	D	Toft	Y-Y C	Lunn	GC	Yarwood	1-0 B	Wardle	E	Buck	1-0 B	Oakes	
Evans	0-1 I	Saunders	T	Walsh	1-0 C	Hayland	H	Paopuu	Y-Y RA	Guest	C	Lunn	1-0 B	Crownshaw	
Webster	0-1 GB	Harper	F	Linton	1-0 M	Gaunt	RJ	Hooton	0-1 R	Keenan	M	Gaunt	Y-Y P	Mitchell	
Ecclesall	2	B. & J.	4	Barnsley	3	Chesterfield	3	B. & J.	2½	Hope Valley	3½	Chesterfield	4½	Ecclesall	1½
Williams	0-1 PW	Baxter	K	Hunter	1-0 M	Johnson	JS	Speck	0-1 A	Rutherford	AM	Head	1-0 JE	Williams	
Rayson	Y-Y D	Toft	T	Johnson	1-0 AM	Head	SW	Cooke	0-1 MJ	Joyce	G	Peters	1-0 E	Carnie	
Anderson	0-1 T	Walsh	B	Holdsworth	0-1 G	Peters	T	Walsh	0-1 JR	Hoole	GC	Yarwood	Y-Y MA	Anderson	
Diaper	0-1 N	Bennett	D	Woodhouse	Y-Y GC	Yarwood	DL	Cook	1-0 AJ	Campbell	RJ	Hooton	0-1 A	Diaper	
Crownshaw	1-0 S	Butcher	C	Lunn	Y-Y RJ	Hooton	P	Linton	1-0 D	Elwood	H	Paopuu	1-0 P	Mitchell	
Mitchell	Y-Y R	Webster	L	Beres	0-1 H	Paopuu	S	Maan	Y-Y CE	Williams	ML	Fanshawe	1-0	Absentee	
Hope Valley	3½	Aughton	2½	Workshop	3	Hope Valley	3	Hope Valley	4	Chesterfield	2	Aughton	4	Chesterfield	2
Rutherford	1-0 PG	Swanson	D	Andrews	Y-Y A	Rutherford	A	Rutherford	0-1 S	Bracey	PG	Swanson	1-0 AM	Head	
Joyce	Y-Y D	Glossop	JL	Coe	0-1 MJ	Joyce	MJ	Joyce	Y-Y AM	Head	G	Glossop	0-1 C	Windle	
Hoole	1-0 T	Bradley	AD	Fidler	0-1 JR	Hoole	JR	Hoole	1-0 GC	Yarwood	T	Bradley	1-0 GC	Yarwood	
Campbell	0-1 JB	Primrose	G	Goddard	1-0 B	Capp	AJ	Campbell	Y-Y RJ	Hooton	JG	Primrose	Y-Y H	Paopuu	
Capp	0-1 A	Aldam	C	Barker	Y-Y D	Mander	D	Mander	1-0 H	Paopuu	G	Barnes	1-0 RJ	Hooton	
Mander	1-0 FM	Higgins	I	Saunders	1-0 R	Jennings	R	Jennings	1-0	Absentee	R	Wilson	Y-Y ML	Fanshawe	
Workshop	3	B. & J.	3	B. & J.	3½	Aughton	2½	Barnsley	1½	Hope Valley	4½	White Lion	2½	Barnsley	3½
Andrews	Y-Y L	Pratt	JS	Speck	Y-Y D	Glossop	K	Hunter	Y-Y A	Rutherford	M	Brumby	Y-Y K	Hunter	
Coe	1-0 JS	Speck	SW	Cooke	0-1 PG	Swanson	B	Holdsworth	0-1 MJ	Joyce	B	Wardle	1-0 T	Johnson	
Saunders	1-0 D	Toft	T	Walsh	0-1 JB	Primrose	D	Woodhouse	0-1 JR	Hoole	RA	Guest	0-1 B	Holdsworth	
Fidler	0-1 T	Walsh	D	Toft	1-0 G	Barnes	E	Buck	0-1 AJ	Campbell	LJ	Fry	0-1 AM	Burrell	
Goddard	Y-Y N	Bennett	N	Bennett	0-1 R	Wilson	C	Lunn	Y-Y D	Mander	R	Keenan	Y-Y C	Lunn	
Smith	0-1 P	Linton	F	Linton	1-0 A	Aldam	E	Soar	Y-Y CE	Williams	N	Goode	Y-Y M	Gaunt	
Hope Valley	6	Ecclesall	0	Ecclesall	3½	White Lion	2½	Chesterfield	3	Workshop	3	White Lion	4	Hope Valley	5½
Rutherford	1-0 JE	Williams	JE	Williams	Y-Y F	Fletcher	AM	Head	0-1 AD	Fidler	KA	McIntosh	0-1 A	Rutherford	
Joyce	1-0 E	Carnie	HW	Rayson	1-0 B	Wardle	G	Peters	Y-Y JL	Coe	M	Brumby	0-1 MJ	Joyce	
Hoole	1-0 MA	Anderson	E	Carnie	Y-Y LJ	Fry	SC	Yarwood	1-0 M	Saunders	P	Fletcher	Y-Y JR	Hoole	
Campbell	1-0 B	Crownshaw	MA	Anderson	1-0 RA	Guest	H	Paopuu	0-1 I	Saunders	B	Wardle	0-1 AJ	Campbell	
Capp	1-0 P	Mitchell	B	Crownshaw	Y-Y R	Keenan	RJ	Hooton	Y-Y AGJ	Smith	LJ	Fry	0-1 CE	Williams	
Jennings	1-0 D	Carnie	P	Mitchell	0-1 N	Goode	TH	Hand	1-0 TH	Absentee	R	Keenan	0-1 R	Jennings	
Aughton	4	Barnsley	2	Workshop	1½	Ecclesall	4½	Chesterfield	4½	B. & J.	1½	Hope Valley	4	Workshop	2
Glossop	1-0 A	Perry	JL	Coe	0-1 JE	Williams	G	Peters	1-0 JS	Speck	A	Rutherford	1-0 JL	Coe	
Swanson	1-0 D	Woodhouse	M	Saunders	1-0 A	Diaper	GC	Yarwood	1-0 T	Walsh	MJ	Joyce	1-0 M	Saunders	
Primrose	Y-Y B	Holdsworth	AD	Fidler	Y-Y E	Carnie	H	Paopuu	Y-Y D	Toft	JR	Hoole	0-1 AD	Fidler	
Sugden	0-1 AM	Burrell	AGJ	Smith	0-1 MA	Anderson	RJ	Hooton	1-0 P	Linton	AJ	Campbell	0-1 I	Saunders	
Barnes	Y-Y E	Soar	GB	Harper	0-1 B	Crownshaw	ML	Fanshawe	Y-Y SW	Cooke	D	Elwood	1-0 AGJ	Smith	
Wilson	1-0 M	Gaunt	G	Goddard	0-1 P	Mitchell	TH	Hand	Y-Y N	Bennett	D	Mander	1-0 GB	Harper	
White Lion	2	Aughton	4	B. & J.	4	Ecclesall	2	Workshop	1½	White Lion	4½	Hope Valley	2½	B. & J.	3½
Brumby	Y-Y D	Glossop	M	Hankinson	1-0 JE	Williams	JL	Coe	0-1 M	Brumby	A	Rutherford	1-0 P	Baxter	
Fletcher	0-1 PG	Swanson	PW	Baxter	0-1 NA	Wragg	AD	Fidler	0-1 P	Fletcher	MJ	Joyce	0-1 JS	Speck	
Wardle	Y-Y J	Farkas	JS	Speck	1-0 E	Carnie	I	Saunders	Y-Y B	Wardle	RJ	Hoole	1-0 SW	Cooke	
Guest	0-1 JB	Primrose	L	Pratt	Y-Y A	Diaper	G	Goddard	Y-Y RA	Guest	AJ	Campbell	0-1 L	Pratt	
Bessell	Y-Y G	Barnes	SW	Cooke	1-0 MA	Anderson	S	Goddard	Y-Y LJ	Fry	D	Elwood	Y-Y T	Walsh	
Knight	Y-Y S	McCandlish	N	Bennett	Y-Y B	Crownshaw	AGJ	Smith	0-1 R	Keenan	B	Capp	0-1 P	Linton	
Chesterfield	3	Barnsley	3	Workshop	2½	Aughton	3½	Ecclesall	2	Chesterfield	4	White Lion	3	Chesterfield	3
Yarwood	0-1 D	Woodhouse	M	Saunders	0-1 D	Glossop	JE	Williams	0-1 J	Denby	M	Brumby	0-1 G	Peters	
Paopuu	Y-Y AM	Burrell	AD	Fidler	Y-Y PG	Swanson	HW	Rayson	Y-Y AM	Head	P	Fletcher	1-0 AM	Head	
Fanshawe	Y-Y C	Lunn	I	Saunders	0-1 JB	Primrose	E	Carnie	Y-Y G	Peters	B	Wardle	Y-Y GC	Yarwood	
Hooton	1-0 T	Brook	C	Barker	Y-Y A	Aldam	MA	Anderson	Y-Y GC	Yarwood	PW	Broadhead	Y-Y H	Paopuu	
Hand	0-1 M	Gaunt	G	Goddard	Y-Y F	Connolly	B	Crownshaw	Y-Y H	Paopuu	RA	Guest	Y-Y RJ	Hooton	
Heath	1-0	Absentee	AGJ	Smith	1-0 K	Randell	P	Mitchell	0-1 ML	Fanshawe	R	Keenan	Y-Y TH	Hand	
B. & J.	2½	White Lion	3½	Ecclesall	3	Barnsley	3	Aughton	2	Workshop	4	White Lion	3	Ecclesall	3
Vallans	Y-Y M	Brumby	JE	Williams	0-1 MJ	Sheard	PG	Swanson	1-0 JL	Coe	M	Brumby	Y-Y JE	Williams	
Baxter	0-1 P	Fletcher	P	Graobey	1-0 A	Perry	D	Glossop	0-1 M	Saunders	P	Fletcher	0-1 HW	Rayson	
Speck	Y-Y B	Wardle	E	Carnie	Y-Y D	Woodhouse	J	Farkas	Y-Y AD	Fidler	B	Wardle	Y-Y E	Carnie	
Walsh	Y-Y RA	Guest	NA	Wragg	1-0 B	Holdsworth	JG	Primrose	0-1 I	Saunders	RA	Guest	1-0 MA	Anderson	
Cooke	1-0 LJ	Fry	A	Diaper	0-1 AM	Burrell	JE	Sugden	Y-Y G	Goddard	S	Bessell	0-1 B	Crownshaw	
Bennett	0-1 R	Keenan	P	Mitchell	Y-Y T	Todd	G	Barnes	0-1 AGJ	Smith	R	Keenan	1-0 P	Mitchell	
White Lion	3	B. & J.	3	Aughton	4	Hope Valley	2	Chesterfield	1½	Hope Valley	3½	Barnsley	3½	Workshop	2½
Brumby	Y-Y PW	Baxter	PG	Swanson	Y-Y A	Rutherford	S	Bracey	0-1 MJ	Joyce	T	Johnson	1-0 JL	Coe	
Fletcher	1-0 JS	Speck	D	Glossop	Y-Y MJ	Joyce	J	Denby	Y-Y JR	Hoole	B	Holdsworth	0-1 M	Saunders	
Wardle	1-0 T	Walsh	J	Farkas	1-0 JR	Hoole	AM	Head	0-1 AJ	Campbell	AM	Burrell	1-0 AD	Fidler	
Guest	Y-Y L	Pratt	JE	Sugden	1-0 AJ	Campbell	GC	Yarwood	0-1 D	Elwood	E	Soar	0-1 G	Goddard	
Fry	0-1 SW	Cooke	G	Barnes	0-1 D	Elwood	H	Paopuu	Y-Y B	Capp	C	Lunn	Y-Y I	Saunders	
Keenan	0-1 N	Bennett	R	Wilson	1-0 CE	Williams	ML	Fanshawe	Y-Y D	Mander	I	Jones	1-0 AGJ	Smith	

Ecclesall	5	Barnsley	1
T Crawley	1-0	JN Stevens	
A Smithson	0-1	T Broad	
M Haworth	1-0	M Gaunt	
T Belhadj	1-0	A Dickinson	
M Howarth	1-0	Absentee	
A Sellars	1-0	Absentee	

B. & J.		24	Clay Cross	34	Barnsley	34	Sheff. Deaf	24	Nomads	54	B. & J.	44	Workshop	5	White Lion	1	
PW	Baxter	0-1 S	Pringle	JN	Stevens	Y-Y	PT Sharpe	D	Greensmith	1-0 R	Webster	G	Goddard	1-0 R	Keenan		
R	Webster	1-0 N	Wright	E	Soar	1-0 D	Whiston	K	Dewhurst	1-0 JH	Evans	AGJ	Smith	1-0 W	Hales		
TE	Rhodes	0-1 P	South	T	Brook	1-0	Absentee	P	Hulse	1-0 TE	Rhodes	GB	Harper	0-1 S	Bessell		
A	Hammond	1-0 M	Higginbottom	T	Todd	0-1 P	Slater	D	Mendham	Y-Y	A	Hammond	SJ	Turner	1-0 J	Howard	
A	Weaver	Y-Y	K Higginbottom	L	Beres	1-0 MW	Simmons	A	Turner	1-0 A	Weaver	M	Ottey	1-0 D	Masters		
AM	Neate	0-1 D	Clarke	M	Gaunt	0-1 S	Beever	A	Wright	1-0 P	Wilcock	I	Saunders	1-0 JS	Knight		
S.A.S.C.A.	3	Ecclesall	3	Aughton	24	White Lion	34	Thorncliffe	44	B. & J.	14	Sheff. Deaf	1	Thorncliffe	5		
DS	MacLean	0-1 R	Hirst	T	Bradley	1-0 S	Bessell	RE	Desmedt	1-0 R	Webster	PT	Sharpe	Y-Y	RE	Desmedt	
MJS	Webster	1-0 T	Crawley	R	Wilson	1-0 R	Keenan	AR	Phillips	Y-Y	JH	Evans	D	Guy	Y-Y	AR	Phillips
D	Shaw	1-0 A	Smithson	PM	Higgins	0-1 W	Hales	F	Furniss	1-0 S	Moon	D	Whiston	0-1 F	Furniss		
BD	MacLean	0-1 M	Howarth	P	Connolly	0-1 N	Ford	D	Hardman	1-0 A	Hammond	P	Slater	0-1 D	Hardman		
G	Sharp	1-0 T	Belhadj	A	Aldam	0-1 J	Howard	JH	Womersley	0-1 TE	Rhodes	MW	Simmons	0-1 JH	Womersley		
B	Scholey	0-1 A	Sellers	J	Higgins	Y-Y	JS Knight	J	Smith	1-0 P	Wilcock	G	Beever	0-1 J	Smith		
Nomads	6	White Lion	0	White Lion	14	Whiston	44	Thorncliffe	5	Barnsley	3	B. & J.	34	Barnsley	24		
MD	Smith	1-0 S	Bessell	S	Bessell	0-1 M	Potts	RE	Desmedt	1-0 T	Johnson	R	Webster	Y-Y	E	Buck	
D	Greensmith	1-0 J	Howard	R	Keenan	0-1 P	Orton	AR	Phillips	0-1 A	Perry	TE	Rhodes	Y-Y	JN	Stevens	
I	Mortimer	1-0 N	Ford	N	Ford	0-1 G	Gray	F	Furniss	1-0 JN	Stevens	A	Weaver	1-0 E	Soar		
P	Hulse	1-0 R	Keenan	W	Hales	Y-Y	A Booth	D	Hardman	1-0 L	Beres	M	Cooper	0-1 L	Beres		
M	Turner	1-0 W	Hales	JS	Knight	0-1 A	Aldam	JH	Womersley	0-1 AD	Groves	AM	Neate	1-0 C	Hayland		
A	Wright	1-0 JS	Knight	D	Masters	1-0 D	Mangion	J	Smith	0-1 CR	Groves	P	Wilcock	Y-Y	M	Gaunt	
S.A.S.C.A.	14	Thorncliffe	44	Sheff. Deaf	24	Nomads	34	Workshop	5	Clay Cross	1	Barnsley	3	Aughton	3		
DS	MacLean	Y-Y	RE Desmedt	PT	Sharpe	0-1 D	Greensmith	G	Goddard	1-0 N	Wright	E	Buck	0-1 T	Bradley		
D	Shaw	1-0 A	Phillips	D	Whiston	1-0 I	Mortimer	AGJ	Smith	0-1 D	Hartley	E	Soar	Y-Y	R	Wilson	
S	Naik	0-1 F	Furniss	M	Sunderland	Y-Y	P Hulse	C	Barker	1-0 P	South	JN	Stevens	1-0 PM	Higgins		
BD	MacLean	0-1 D	Hardman	P	Slater	0-1 A	Harris	I	Saunders	1-0 M	Higginbottom	T	Brook	Y-Y	P	Connolly	
G	Sharp	0-1 JH	Womersley	MW	Simmons	1-0 D	Mendham	GB	Harper	1-0 K	Higginbottom	T	Todd	Y-Y	A	Aldam	
GDE	Moseley	0-1 J	Smith		Absentee	0-1 A	Wright	SJ	Turner	1-0 D	Clark	CR	Groves	Y-Y	J	Higgins	
Thorncliffe	44	Ecclesall	14	Clay Cross	34	S.A.S.C.A.	24	White Lion	14	S.A.S.C.A.	44	Workshop	1	Aughton	5		
RE</																	

Candidates' 1/4-Finals

The Short-Speelman match will take place in August - see below - and the other three are expected to be played in January.

Of the four matches, Karpov-Hjartarson is on paper a very one-sided pairing: a consequence of the seeding in which these two are 1 and 8 respectively. The matches Short-Speelman and Portisch-Timman, on the other hand, are likely to be very close. In each of these two matches the two players are adjacent to each other in the latest rating list! A prognosis regarding the other match, Yusupov-Spraggett, is difficult as although Spraggett as seventh seed 'should' lose to the second seed Yusupov, the latter has been unimpressive in recent tournaments and is now rated below seeds three to six. Spraggett ground down Sokolov, eventually, in the previous round (see bulletin no.) and so on that basis could also beat Yusupov.

SHORT ~ SPEELMAN

There is a similarity between the forthcoming Short-Speelman match and the women's tennis tournament at Eastbourne. Well, Short is famous for his shorts, and Speelman's arms are of a length which ought to be of advantage for playing tennis, but the real connection is that both events are sponsored by Pilkington Glass who are covering the running costs besides providing £20,000 prize money of which the significantly greater proportion will go to the winner. The fact that both players wear glasses is probably a coincidental fact.

The match will be played in Cinema 1 of the Barbican Centre in London, and will be for the best of six games. In the event of a 3-3 tie, a further two games will be played. If that leaves a 4-4 tie then the match will be resolved by a 'sudden death' series of quickplay games. This was the same formula as was used in the previous round. The rôle of Chief Arbiter will be filled by R.G.Wade, with Louise MacDonald as Assistant Arbiter.

(2 p.m. to 8 p.m.)

Wed. 17th Aug.	main game 1
Thu. 18th Aug.	main game 2
Fri. 19th Aug.	
Sat. 20th Aug.	main game 3
Sun. 21st Aug.	main game 4
Mon. 22nd Aug.	
Tue. 23rd Aug.	main game 5
Wed. 24th Aug.	
Thu. 25th Aug.	main game 6
Fri. 26th Aug.	
Sat. 27th Aug.	extra game 1
Sun. 28th Aug.	
Mon. 29th Aug.	extra game 2
Tue. 30th Aug.	[sudden death quickplay series]
Wed. 31st Aug.	

spectators in the playing area, with plush seats overlooking the stage where the games will be played, and TV monitors in the aisles. 'Expert' commentary will be available in a separate room, and it may be possible to hire headphones allowing the commentary to be followed in the playing area. Tickets are available from the Barbican box office (01-638-8891) at £5 for a single day, or £25 for the whole match including any play-offs. Tickets for the first six games may be booked in advance. Booking opened on the 2nd of July.

£ British Chess Federation accounts for the financial year ended
p 30th April 1987 were presented to a Finance Council meeting on
\$ 21st May 1988, and stated income of £166,119 and expenditure of
¢ £174,852 and hence showing a loss of £8,733.

¥
f British Chess Magazine Ltd reported a profit of £6,866 for the
Pt year ended 31st August 1987, despite major building repairs.

ACTIVE CHESSES

Reference was made in bulletin 30 to FIDE's endorsement of 'Active' chess as it chooses to call what in this country is 'quickplay'. Criticisms alleging potential for damage to serious chess have come from different directions. The Association of Grandmasters (GMA) - regarding which see below - devoted much of its AGM to the subject. At one stage a motion was passed, albeit with most people abstaining from the vote, bringing 'moral condemnation' on GMA members who elect to play in such FIDE organised events. Later this matter was referred instead to a postal ballot.

The USSR's first major Active Chess tournament took place in Tallinn in early May against a background of criticism from 20 soviet GMs including Kasparov expressed in a letter to the trade union newspaper 'Trud' (=Work). The entry comprised 40 qualifiers from different regional events, including 18 GMs and 9 IMs, and the top eight were to qualify for a tournament held later at Gijon, Spain.

Gijon, 30th May to 4th June
Active (30/30) Chess tournament

1	Anatoly Karpov	USR	10
2	Vladimir Tukmakov	USR	10
3	Viktor Gavrikov	USR	9½
4	Jann Ehlvest	USR	9
5	Hans Ree	HOL	9
6	Igor Novikov	USR	9
7	M. Krasenkov	USR	9
.	.	.	.
11=	Tony Kosten	ENG	8
.	Rafael Vaganyan	USR	8
.	Kiril Georgiev	BLG	8
.	et al.	.	.
25=	William Watson	ENG	7½
.	Maya Chiburdanidze	USR	7½
also	Glenn Flear	ENG	7
.	Joe Gallagher	ENG	6½
.	Nigel Davies	ENG	5½
.	Thomas Clarke	IRL	4½

The event in Gijon comprised 109 entrants playing in a 13-round Swiss. Karpov clearly does not share Kasparov's apparent disdain for such events. Besides winning first prize, and allegedly being paid a large appearance fee, he was awarded the best game prize of \$1,000 for a game with Kuzmin in which the latter may have missed a win and in the end blundered into a mate in a drawn ending. It seems it wasn't real best game material.

G.M.A.

Due in part to some professional grandmasters' dissatisfaction with the organisation of their game, regarding matters such as tournament conditions, calendar clashes brought about by lack of co-ordination between organisers, and of course the matter of the size of prizes, the 'Association of Grandmasters' was formally set up in Brussels on the 14th of February 1987. Among those present at the inauguration were Kasparov, Timman, Seirawan, Portisch, Ljubojevic and Nunn. Kasparov was elected president. Others including Spassky and Korchnoy have joined and the membership now exceeds thirty.

A problem seems to have arisen with the name which logically would be abbreviated to 'AGM'. Presumably because of the confusion that would cause, the association uses the brief name 'GMA'. So it was that the GMA had its first AGM on the 26th of April 1988.

The association enables professional GM's to voice an independant opinion on the more political aspects of chess, independant that is to say of FIDE and national federations. The most interesting thing it has done however is to set up a series of 'World Cup' tournaments.....

The World Cup series of tournaments set up by the GMA consists of six tournaments, and was originally to have involved 24 players, but that has been increased to 25 by the addition of Nogueiras of Cuba.

Each event has a prize fund of \$100,000, with prizes on a sliding scale from \$20,000 for 1st place down to \$2,000 for last place.

Each player plays in four of the six events and scores Grand Prix point in each, calculated as his game points scored in the tournament plus 'performance' points which are 17 for 1st place, 16 for 2nd, and so on. A player's best three Grand Prix scores are added to give his final Grand Prix total. The Grand Prix prize fund totals at least \$600,000, providing a first prize of \$100,000 down to a 25th prize of \$8,000.

Overall, the most one player can win from the series is \$180,000, being the Grand Prix first prize plus four tournament first prizes. The least a player can win is \$16,000, being the Grand Prix 25th prize and four bottom place tournament prizes.

The schedule of tournaments is as follows. The second event was to be held in Bilbao, but had to be switched to Belfort in France. Four of the tournaments are to include a local player eligible for tournament prizes but not Grand Prix prizes.

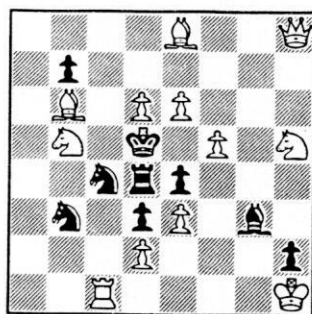
venue:	Brussels	Belfort	Reykjavik	Barcelona	Rotterdam	Skelleftea
	Belgium	France	Iceland	Spain	Holland	Sweden
from	31/3/88	12/6/88	1/10/88	1/4/89	1/6/89	10/8/89
to	24/4/88	5/7/88	26/10/88	27/4/89	27/6/89	4/9/89

Anderson	-- J ----- J ----- J -----	J -----
Belyavsky	-- J ----- J ----- J -----	J -----
Ehlvest	----- J ----- J -----	J -----
Hjartarson	----- J ----- J -----	J -----
Hübner	----- J -----	J -----
Karpov	-- J ----- J -----	J -----
Kasparov	----- J ----- J -----	J -----
Korchnoy	-- J ----- J -----	J -----
Ljubojevic	-- J ----- J -----	J -----
Nikolic	-- J ----- J -----	J -----
Nogueiras	-- J ----- J -----	J -----
Nunn	-- J ----- J -----	J -----
Portisch	-- J ----- J -----	J -----
Ribli	----- J ----- J -----	J -----
Salov	-- J ----- J -----	J -----
Sax	-- J ----- J -----	J -----
Seirawan	-- J -----	J -----
Short	----- J -----	J -----
Sokolov	-- J ----- J ----- J -----	J -----
Spassky	----- J ----- J -----	J -----
Speelman	-- J ----- J ----- J -----	J -----
Tal	-- J ----- J -----	J -----
Timman	-- J ----- J ----- J -----	J -----
Vaganian	-- J ----- J -----	J -----
Yusupov	----- J ----- J -----	J -----
a local	-- J ----- J -----	J -----

(J denotes participation of a player in a tournament. Thus Short plays at Belfort, Barcelona, Rotterdam, and Skelleftea.)

L140: V F RUDENKO

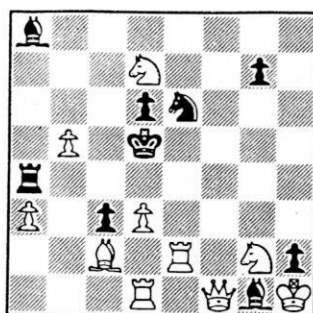
Szachy, 1958



Mate in two

L141: V F RUDENKO

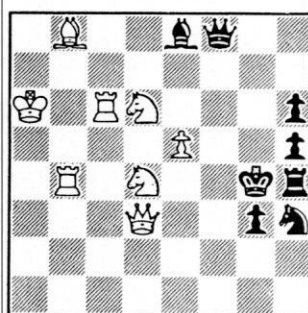
Ajedrez Artistico, 1973



Mate in two

L142: V F RUDENKO

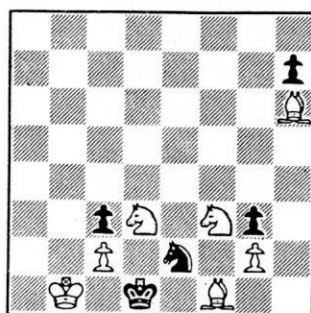
3rd Prize, Deutsche Schachzeitung, 1958



Mate in two

L143: V F RUDENKO

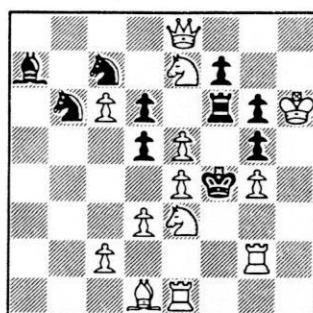
1st Prize, Suomen Shakki, 1957



Mate in three

L144: V F RUDENKO

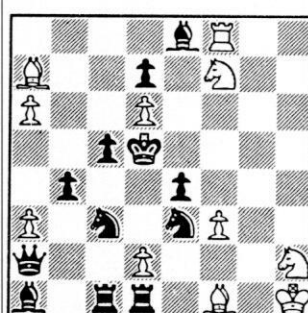
Stella Polaris, 1974



Mate in three

L145: V F RUDENKO

1st Prize, Problemista, 1962



Helpmate in two

Two solutions (see text)

FOR SOLVING

No study this issue because it is time to pay tribute to one of our elders and betters. The greatest chess problem composer in the world today is generally considered to be Valentin F RUDENKO of the Soviet Union. He is also very prolific; I have a collection of his problems published in 1983 and it contains 1162 problems - and he's still composing! Above are six of his problems for your solving delight. If you haven't tried solving before why not try this time? There's plenty of books to be won in the ladder competition. L145 is a helpmate in two with two solutions and with 3 variations on white's first move.

SOLUTIONS (Issue 32)

E30 (Shinkman)

1.Ke4 Bg2+ 2.Ke5 Bc6 3.Kd6 Bxa4 4.Kc7 b5 (i) 5.Kxd7 b4+ 6.Kd6 b3 7.Kc5 b2 8.Kb4 Be6 9.Ka3 d3 9.Kb2= An unusual study - the point being that black can't mate with queen alone (the bK is bottled up!); he must retain his bishop, and that he hasn't got time to do.

L125 (Kubbel)

1.Se4 (2.Re7++) 1...Kxe4/Bxe4 2.exf3/Sg6++ Tricky! Tempting is 1.e4? (2.Sg6++) dxe4 ep/fxe4 ep/Bxe4/Rg1 2.Qc3/Qg3/Qxe4/Sxf3++ but 1...Rg2! refutes.

L126 (Millins)

1.Kc4 (2.Qe7++) 1...Bb5+/Sg6/c5/f6/f5/Qd3+/b5+/Rxb4+/Rxc3+ 2.Kb5/Kd3/Qd6/Qd5/Kd3/Kxd3/Kc5/Kxb4/Kxc3++ With mates set for 1...Rxb4+ and 1...Rxc3+ it seems extremely unlikely that wK will walk into 3 more checks!

L127 (Kuznetsov & Kuzovkov)

1.Qh3 [2.Bb1 (3.Rd4++) Bf6 3.Sxd6++]

1...Sf6 2.Bb1 (2.Rd4++) Bxf3 3.Bxc2++

1...bxc6 2.Rd5 (3.cSd2++) cxd5/Kxd5/Sd4 3.fSd2/Qxf5/Rxd4++

1...Bf8 2.Sxd6+ Bxd6/Rxd6 3.Bd5/Sxg5++

1...d5 2.Rd4+ Sxd4 3.fSd2++

1...g4 2.Sg5+ Bxg5,Rxg5 3.Qd3++

L128 (Kirillov & Udartsev)

1.Sh4 [2.Sd6+ Kd4 3.Sxf5++]

1...Rxf6 2.c4 (3.Bxd5++) Bxc4 3.Rxc4++

1...Rg5 2.c3 (3.Sd6++) Rxf4 3.Qxf4++

1...5Rxf4 2.cxd3+ Rxd3 3.Qxf4++

1...Rxe5 2.bxc3 & 3.Rc4++

The 4 moves of the bRf5 are met by the 4 moves of wPc2 (ALBINO). Such correspondence is a currently popular idea.

L129 (Kniest)

1.Sd7 f5 2.Kd6 Bf8++; 1.Sd5 Bh7 2.Kd4 Qxf2++

A double pin mate in each line.

DARNALL AND HANDSWORTH SOLVING LADDER

SOLVER	PRIOR ASCENTS	TOTAL B/F	ISSUES										ISSUES TOTAL	
			21	22	23	24	25	26	27	28	29	30	021-030	C/F
Maxima	-	-	110	90	120	120	115	120	0	0	110	100	885	
Bird, Steve	0	17	-	-	-	-	-	-	-	-	-	-	0	17
Bramall, Alan	0	10	-	-	-	-	-	-	-	-	-	-	0	10
Brown, Geoff	1	378	48	37	24	-	-	20	-	-	19	68	216	594
Clarke, Frank	1	426	69	79	88	47	65	115	-	-	85	-	548	974
Emerton, Mark	0	0	-	81	98	94	88	115	-	-	102	98	676	676
Gallagher, John	0	5	-	10	-	-	-	-	-	-	-	10	20	25
Hodgett, Dave	0	35	-	-	-	-	-	-	-	-	-	-	0	35
Slater, David	0	3	-	-	-	-	-	-	-	-	-	-	0	3
Somerset, Bill	0	243	-	-	-	-	-	-	-	-	-	-	0	243
Turnidge, Mick	0	17	-	-	-	-	-	-	-	-	-	-	0	17
Whitfield, John	1	6	-	-	-	-	-	-	-	-	-	-	0	6

A fairly comfortable win for Mark Emerton even though he didn't start solving until issue 22! He has already received his prize, an openings book by world famous theoretician and Grandmaster Alexei Suetin. So be careful next time you play him - there's probably some new lines being hatched during the closed season! Geoff Brown seems to be slowing down; perhaps recent material has been too tough to solve from the diagram? Frank Clarke continues steadily and appears well placed to be the first person to achieve a second ascent. As for everybody else, well the kindest way I can put it is they all seem to be trying to achieve the record for the slowest ascent! Come on you dormant solvers, let's see some action. New solvers also always welcome! Don't forget, there's a book prize for every ladder ascent and a book prize for the best score over ten issues. The competition for the next ten issues will start with the problems in issue 33 (not 31) and will run to issue 42. Issues 31 and 32 will still count for ladder ascents.